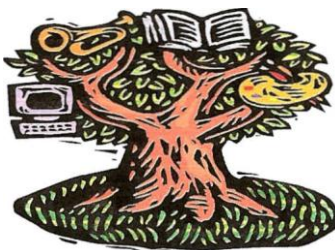


# Model Laboratory School Gifted and Talented Services



## Introduction

Kentucky's revised Administrative Regulation on Gifted Education: 704 KAR 3:285 requires that each district adopt policies and procedures which provide for the identification of gifted/talented students in grades K -12, possessing demonstrated or potential ability in one or more of the following areas:

- ❖ *general intellectual aptitude*
- ❖ *specific academic aptitude*
- ❖ *creative or divergent thinking*
- ❖ *leadership skills*
- ❖ *visual and/or performing arts*

The regulation also requires that districts provide multiple service options to meet the needs of students identified as gifted/talented. The following guide outlines Model Laboratory School's procedure for identification and service of gifted and/or talented students.

## Goals and Objectives

**GOAL:** All students diagnosed as possessing gifted characteristics, behaviors, and talents will be provided articulated services which are "qualitatively differentiated to meet their individual needs, and that will result in educational experiences commensurate with their interests, needs, and abilities." (704 KAR 3:285)

**OBJECTIVES:** In order to accomplish this goal, Model Laboratory School's Gifted/Talented Services Program will:

1. Identify students who meet school and state guidelines as gifted/talented learners.
2. Require all certified personnel to participate in professional development to enable them to identify and serve the needs of the gifted.
3. Provide a continuous K -12 program of educational experiences that are differentiated to meet the needs of gifted learners.